

Key: 1355

Town of CHATHAM - Fiscal Year 2024

9/7/2023 9:38 am SEQ #: 1.475

LEGALS

Table with columns: CURRENT OWNER, PARCEL ID, LOCATION, TRANSFER HISTORY, DOS, T, SALE PRICE, BK-PG (Cert). Includes owner info for SMITH JACKSON C and transfer history for 12I-6-1A.

Table with columns: CD, T, AC/SF/UN, Nbhd, Inf1, Inf2, ADJ BASE, SAF, Inf3, Lpi, VC, CREDIT AMT, ADJ VALUE. Includes totals for assessed, current, and previous values.

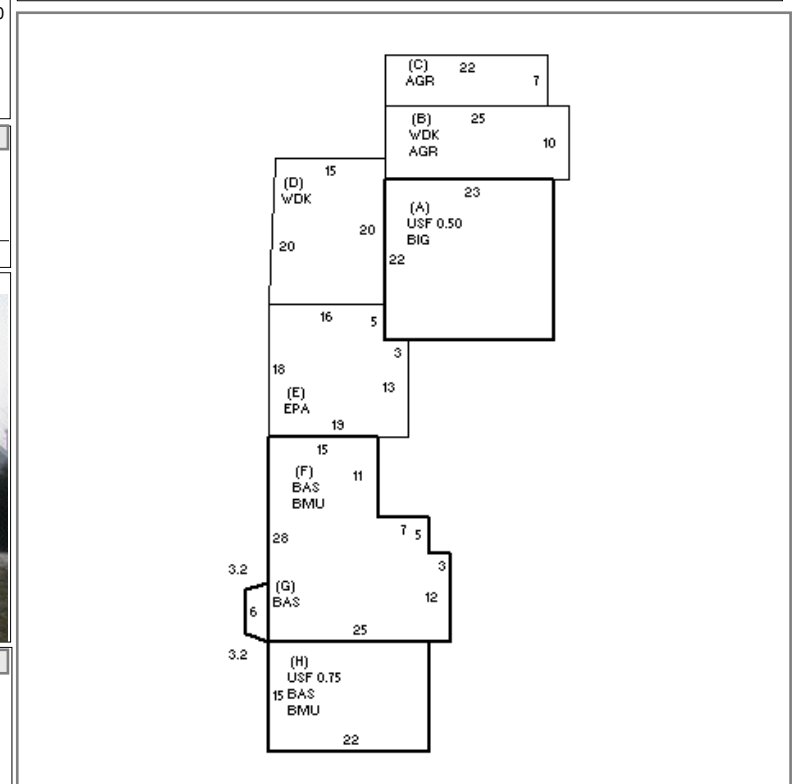
Table with columns: TY, QUAL, COND, DIM/NOTE, YB, UNITS, ADJ PRICE, RCNLD. Includes a photo of the property taken on 12/21/2021.



Table with columns: BUILDING, CD, ADJ, DESC, MEASURE, 12/21/2021, NF. Includes building details like model, style, quality, and frame.

Table with columns: YEAR BLT, SIZE ADJ, UNITS, ADJ, ELEMENT, CD, DESCRIPTION, ADJ. Includes capacity and unit details for various building elements.

Table with columns: CLASS, CLASS%, DESCRIPTION, BN ID, BN, CARD. Includes a list of transactions with dates and descriptions like SALES QUESTI, Window Rplc, Reroof, DECK, and VARIANCE.



DETACHED

BUILDING

ILDING

Table with columns: BLDG COMMENTS. This section is currently empty.

Table with columns: S, BAT, T, DESCRIPTION, UNITS, YB, ADJ PRICE, RCN, TOTAL RCN, 582,940. Includes a summary of building components and their values, along with condition and depreciation details.