

Key: 3305

Town of CHATHAM - Fiscal Year 2024

9/7/2023 9:38 am SEQ #: 3.591

LEGALS LAND

Table with columns: CURRENT OWNER, PARCEL ID, LOCATION, TRANSFER HISTORY, DOS, T, SALE PRICE, BK-PG (Cert). Includes owner BARCLIFF PROPERTIES LLC and parcel 15G-23-K1.

Table with columns: CLASS, CLASS%, DESCRIPTION, BN ID, BN, CARD. Includes payment history for 1010 and 100 classes.

Table with columns: CD, T, AC/SF/UN, Nbhd, Inf1, Inf2, ADJ BASE, SAF, Inf3, Lpi, VC, CREDIT AMT, ADJ VALUE. Includes totals for assessed, current, and previous values.

Table with columns: TY, QUAL, COND, DIM/NOTE, YB, UNITS, ADJ PRICE, RCNLD. Includes property details like DGF, IPV, and PTD.

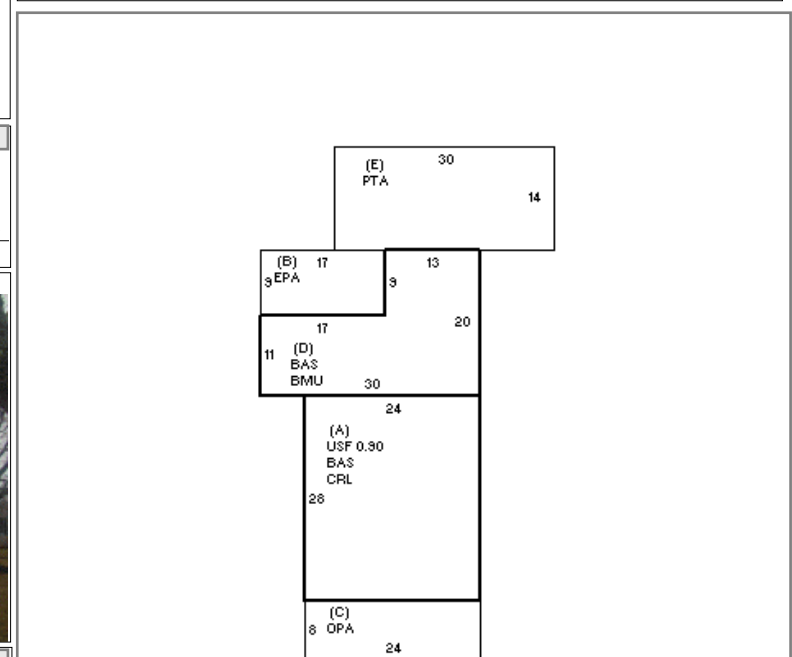


Table with columns: BUILDING, CD, ADJ, DESC, MEASURE, 3/9/2022, NF. Includes building details like MODEL, STYLE, and QUALITY.

Table with columns: BLDG COMMENTS. Includes a section for building notes.

BU ILDING

Large summary table with columns: YEAR BLT, NET AREA, \$NLA(RCN), CAPACITY, UNITS, ADJ, ELEMENT, CD, DESCRIPTION, ADJ, S, BAT, T, DESCRIPTION, UNITS, YB, ADJ PRICE, RCN, TOTAL RCN, CONDITION ELEM, CD. Includes detailed breakdown of building elements and costs.