

Key: 522

Town of CHATHAM - Fiscal Year 2024

9/7/2023 9:38 am SEQ #: 602

LEGAL

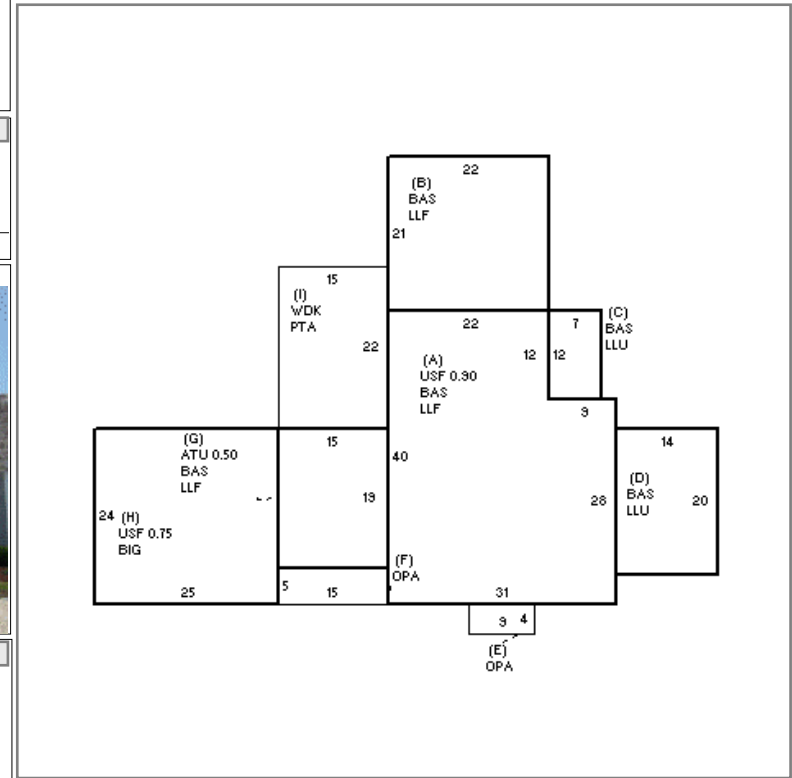
Table with columns: CURRENT OWNER, PARCEL ID, LOCATION, TRANSFER HISTORY, DOS, T, SALE PRICE, BK-PG (Cert). Includes owner info for Morgan Benjamin K & Heather L and transfer history from 2012 to 2015.

Table with columns: CLASS, CLASS%, DESCRIPTION, BN ID, BN, CARD. Lists multiple HSEs (17-266, 17-265, 16-603, 16-069, 15-830) with details on renovations and foundation work.

LAND

Table with columns: CD, T, AC/SF/UN, Nbhd, Infil1, Infil2, ADJ BASE, SAF, Infil3, Lpi, VC, CREDIT AMT, ADJ VALUE. Includes zoning (R40) and assessed values.

Table with columns: TY, QUAL, COND, DIM/NOTE, YB, UNITS, ADJ PRICE, RCNLD. Includes a photo of the property and building details.



DETAILED

Table with columns: BUILDING, CD, ADJ, DESC, MEASURE, 4/12/2017, NF. Includes building model, style, quality, and frame details.

BUILDING

Large table with columns: YEAR BLT, NET AREA, \$NLA(RCN), CAPACITY, UNITS, ADJ, ELEMENT, CD, DESCRIPTION, ADJ, S, BAT, T, DESCRIPTION, UNITS, YB, ADJ PRICE, RCN, TOTAL RCN, CONDITION ELEM, CD. Includes detailed building specifications and financial data.

