

Key: 6979

Town of CHATHAM - Fiscal Year 2024

9/7/2023 9:38 am SEQ #: 7.456

LEGALS AND

Table with columns: CURRENT OWNER, PARCEL ID, LOCATION, TRANSFER HISTORY, DOS, T, SALE PRICE, BK-PG (Cert). Includes owner info for HOWES DONALD & JEAN C and transfer history from 05/25/2011 to 09/05/1995.

Table with columns: CLASS, CLASS%, DESCRIPTION, BN ID, BN, CARD. Includes payment history for 14-551 and 96-187 from 09/24/2014 to 04/17/1996.

Table with columns: CD, T, AC/SF/UN, Nbhd, Inf1, Inf2, ADJ BASE, SAF, Inf3, Lpi, VC, CREDIT AMT, ADJ VALUE. Includes totals for assessed, current, and previous values.

Table with columns: TY, QUAL, COND, DIM/NOTE, YB, UNITS, ADJ PRICE, RCNLD. Includes details for SHF (Single Family Home) with quality A and condition 10.090.

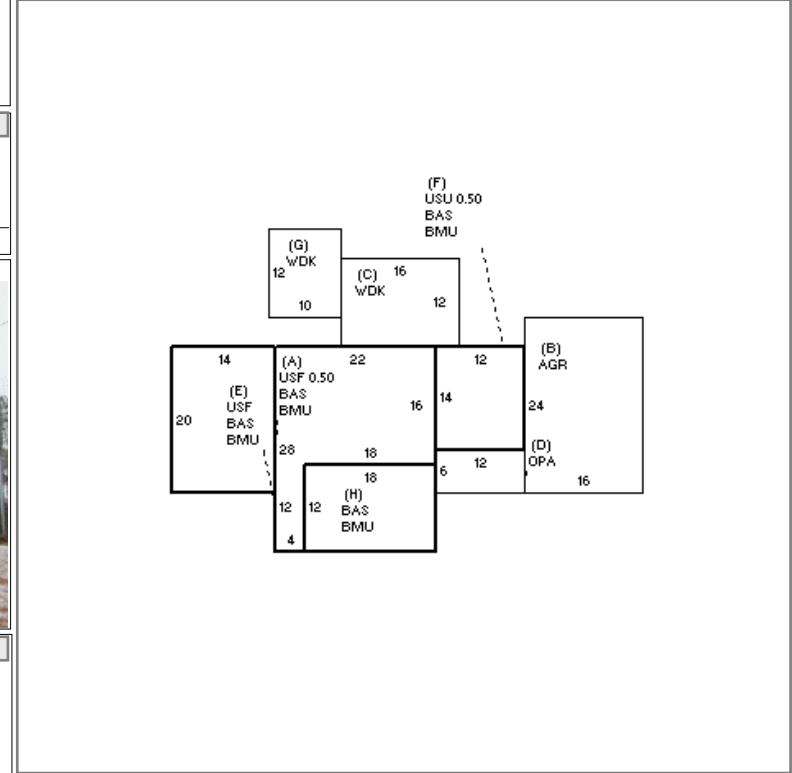


Table with columns: BUILDING, CD, ADJ, DESC, MEASURE, 11/22/2019, TCK. Includes building details like MODEL 1, STYLE 4, and QUALITY A.

Table with columns: BLDG COMMENTS. Currently empty.

DETAILED

BUILDING

Large table with columns: YEAR BLT, NET AREA, \$NLA(RCN), CAPACITY, UNITS, ADJ, ELEMENT, CD, DESCRIPTION, ADJ, S, BAT, T, DESCRIPTION, UNITS, YB, ADJ PRICE, RCN, TOTAL RCN, 553.011, CONDITION ELEM, CD. Includes detailed building specifications and a summary table for RCNLD \$431,300.